

## **After the Angiogram**

After the test you will return to the day ward.

♥In the day ward the nurse will check your blood pressure and the wound site regularly.



♥You will be given something to eat and drink.

♥You will be given special instructions about what you can and can't do for the next few days

♥The doctor will see you and answer any questions that you may have before you go home.



♥A responsible adult must stay with you over night.

♥If you live more than 1 HOURS DRIVE from Dublin you must stay in Dublin overnight.



For any further information contact the Day Ward at 4143490. (7.30am-5.30pm Monday – Friday)



This leaflet was updated by the Cardiac Catheterisation Laboratory 2014

Print and Design by Medical Photography and Illustration Department  
AMNCH

REF: MP019



## **Tallaght Hospital**

**Advice for patients undergoing Day case Coronary Angiogram.**

**A patient information leaflet**

## What is an Angiogram?

♥ An Coronary Angiogram is a test using dye and x-ray to see if there are any narrowing's or blockages in the arteries around your heart. The test also gives the doctor information about the valves and chambers in your heart. This test helps the doctor to decide on the best treatment for you.

### Before the angiogram

♥ Before your angiogram, you will be given an appointment to attend the **Pre assessment unit** in the **Day-care** department at Tallaght hospital to have some routine tests done.

These are:

- ♥ Blood tests
- ♥ An ECG (heart tracing)



♥ If you are on any medications (tablets), please bring them with you to your pre assessment appointment. The nurse will advise you which medications or tablets you should take on the morning of your test.



♥ Some tablets must be stopped for a few days before the test. These include the Diabetic tablet (Glucophage) or Blood thinning tablets (Warfarin, Pradaxa, Xarelto, Eliquis). You will be told when to stop **AND** re-start these medications.

## On the day of the Angiogram

♥ It is ***very important*** that someone **brings you to the hospital and collects you following the test.**

♥ Eat a light breakfast before 6 am.  
Do not eat or drink anything after your breakfast.



♥ Take your usual morning medications/tablets at this time unless you have been told otherwise

♥ Bring all medications with you to the hospital on the morning of the procedure.

♥ Please shower on the morning of the test.

♥ Please bring a dressing gown and slippers with you.



♥ You may bring your glasses and hearing aid (if any) but leave all jewellery and valuables at home.

♥ Unless otherwise instructed, you should be at the Day-care unit **by 8.15 am.**

## The Angiogram

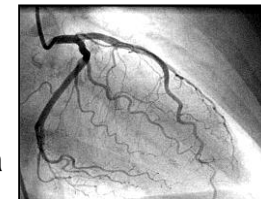
♥ The angiogram test is carried out in the Cardiac Catheterisation Laboratory (in the x-ray department)

♥ The Cardiac Cath lab nurse will explain everything and remain with you during the Angiogram.

♥ The test is performed using a local anaesthetic and intravenous sedation and usually takes between 20 and 30 minutes.

♥ The doctor places a small plastic tube into an artery in your wrist or groin.

♥ A small amount of contrast dye is injected through this tube into the coronary arteries which can be seen on the x-ray screen.



♥ The x-ray camera will move around your chest during the test.

♥ After the procedure the doctor will remove the tube and apply a tight band to your wrist for two hours or put pressure on your groin for 15 minutes depending on the site used.